

alendel[®]
interior inspiration

INTRODUCING OUR
FALL 2022
COLLECTIONS



DESERT SAND & WINDSONG

Desert Sands & Windsong are Alendel's latest addition to the color inspiration series. This 2-book collection embodies all the elements of the New Bohemia including texture, natural fibers, organic design and a fresh invigorating color palette. From Vintage prints to floral embroideries, a classic damask or even multi colored stripes, Desert Sands & Windsong are a go to source book. Desert sands encompasses all the natural and mineral tones and Windsong highlights color with the use of subtle pinks, blues, greens and even corals. Layer these designs with our new Mondavi velvet to truly enhance any design project.

Watercolor pastel prints | BARNEY



Eyelash floral embroideries | BRIDGET



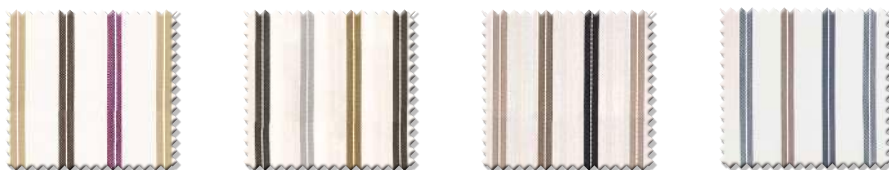
Multi-color, detailed stunning floral embroideries | BELLA



Natural, heavily textured botanical embroideries | BROOKLYN



Jacquard woven multi-colored textured stripes | BENJAMIN



Organic, cotton blend textural jacquards | BLAKE, BROCK & BETHANY



Organic & botanical linen blend embroideries | BEATRIX, BELINDA & BYRON



Beautiful floral prints | BETSY



Plain linen like fabric | LINENHOUSE



BARNEY

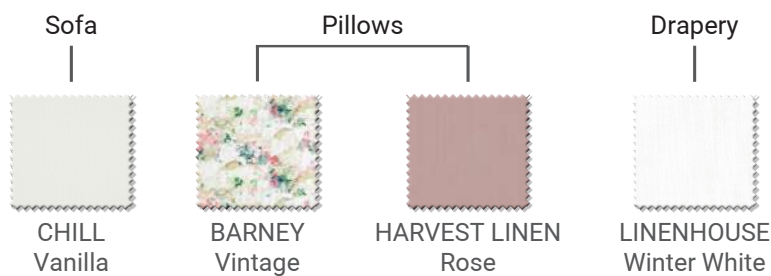
- 100% Cotton
- Width : 56" (142cm)
- V: 25" (63.5cm) - H: 26.75" (68cm)
- 33,000 DR Wyzenbeek
- Pilling Class 5

- NFPA 260/UFAC Class 1, CAL 117/SE
- WS - Spot Clean
- Country of Origin: India
- Available in 3 colors

alendel
interior inspiration



ROOM SET 1
Living room

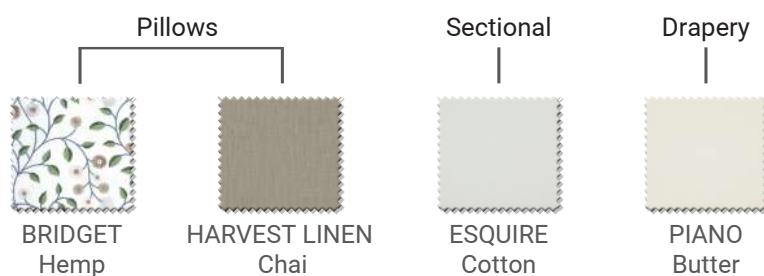


BRIDGET

- 50% Cotton, 50% Polyester
Embroidery: 100% Polyester
- Width: 55" (140cm)
- Embroidered Usable Width: 52" (132cm)
- V: 9.25" (23cm) - H: 25.25" (64cm)
- 25,000 DR Wyzenbeek
- Pilling Class 3
- NFPA 260/UFAC Class 1, CAL 117/SE
- S-Dry Clean
- Country of Origin: India
- Available in 3 colors



ROOM SET 2
Living room



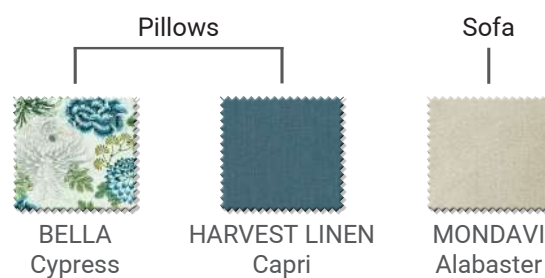
BELLA

- 50% Viscose, 26% Polyester, 24% Cotton
Embroidery: 100% Viscose
- Width: 55" (140cm)
- Embroidered Usable Width: 52" (132cm)
- V: 18.25" (46cm) H: 17.5" (44cm)
- 15,000 DR Wyzenbeek

- Pilling Class 4-5
- NFPA 260/UFAC Class 1, CAL 117/SE
- S - Dry Clean
- Country of Origin: India
- Available in 2 colors



ROOM SET 3
Living room



BROOKLYN

- 60% Cotton, 40% Polyester
Embroidery: 100% Cotton
- Width: 56" (142cm)
- Embroidered Usable Width: 51" (130cm)

- V: 6.3" (16cm) - H: 5.5" (14cm)
- P-Dry Clean
- Country of Origin: India
- Available in 7 colors

alendel
interior inspiration



ROOM SET 4
Living room

Pillows



BROOKLYN
Oatmeal



HARVESTLINEN
Crystal



RELAX
Almond

Sofa Cushions

BENJAMIN

- 100% Polyester
- Width: 55" (139cm)
- V: Stripe - H: 7" (17.5cm)
- 25,000 DR Wyzenbeek ISO 12947-2:2016
- Pilling Class 4-5

alendel
interior inspiration

- WA-Washable / P-Dry Clean
- Country of Origin: India
- Available in 4 colors



ROOM SET 5
Kitchen

Roman Shades

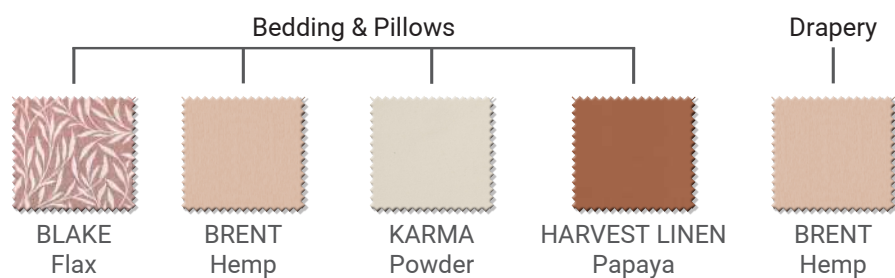


BENJAMIN
Fig

BLAKE

- 78% Polyester, 14% Cotton, 8% Linen
- Width: 55" (140cm)
- V: 9" (23cm) - H: 9" (23cm)
- 25,000 DR Wyzenbeek ISO 12947-2:2016
- Pilling Class 3-4

- WA-Washable / P-Dry Clean
- Country of Origin: India
- Available in 7 colors

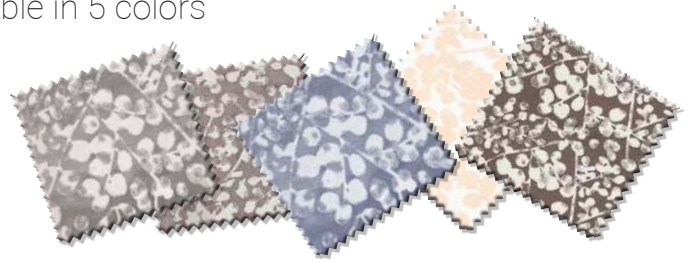


BETHANY

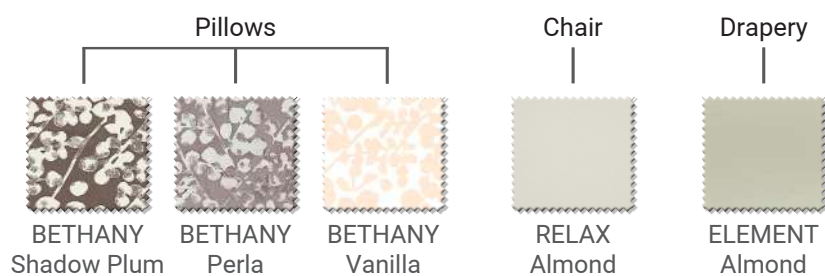
- 64% Polyester, 36% Cotton
- 55" (140cm)
- V: 15.75" (40cm) - H: 14.00" (35cm)
- 25,000 DR ISO Wyzenbeek 12947-2:2016
- Pilling Class 4-5

- WA-Washable / P-Dry Clean
- Country of Origin: India
- Available in 5 colors

alendel
interior inspiration



ROOM SET 7
Living Room

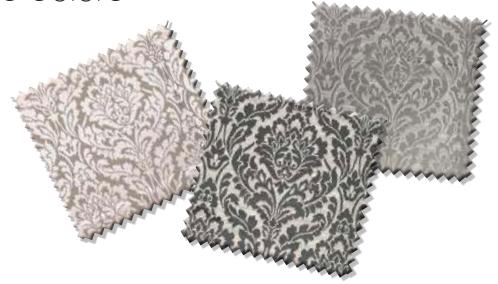


BROCK

- 60% Polyester, 40% Cotton
- 55" (140cm)
- V: 14.75" (37cm) - H: 9.25" (23.5cm)
- 25,000 DR ISO Wyzenbeek 12947-2:2016
- Pilling Class 4-5
- WA-Washable / P-Dry Clean

- Country of Origin: India
- Available in 3 Colors

alendel
interior inspiration



ROOM SET 8
Bedroom

Bedding & Pillows



BROCK
Regal



HARVEST LINEN
Cocoa

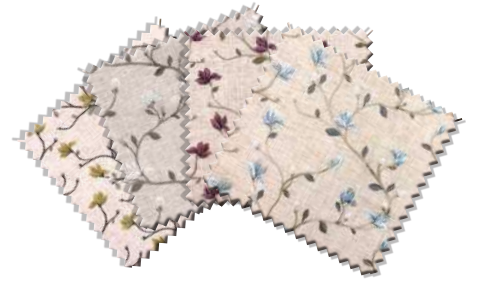


HARVEST LINEN
White

BEATRIX

alendel
interior inspiration

- 60% Polyester, 21% Cotton, 10% Linen, 9% Viscose
- Embroidery: 100% Viscose
- Width: 56" (142cm)
- Embroidered Usable Width: 51" (130cm)
- V: 9.25" (23.6cm) - H: 16.75" (42.5cm)
- WA-Washable / P-Dry Clean
- Country of Origin: India
- Available in 4 colors



ROOM SET 9
Living Room

Pillows



BEATRIX
Wisteria

Chairs



SOHO
Cashew

Drapery



HARVEST LINEN
Crystal

BELINDA

- 60% Polyester, 21% Cotton, 10% Linen, 9% Viscose
Embroidery: 100% Viscose
- Width: 56" (142cm)
- Embroidered Usable Width: 51" (130cm)

- V: 9.5" (24cm) - H: 17" (43cm)
- WA-Washable / P-Dry Clean
- Country of Origin: India
- Available in 4 colors

alendel
interior inspiration



ROOM SET 10
Living Room

Pillow & Throw



BELINDA
Hazelwood

Chair



RELAX
Honey

Drapery

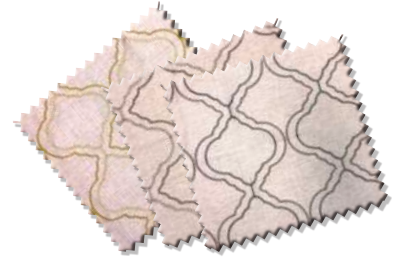


HARVEST LINEN
Angel

BYRON

- 60% Polyester, 21% Cotton, 10% Linen, 9% Viscose
- Embroidery: 100% Viscose
- Width: 56" (142cm)
- Embroidered Usable Width: 51" (130cm)
- V: 9.25" (23.5cm) - H: 10.5" (27cm)
- WA-Washable / S-Dry Clean
- Country of Origin: India
- Available in 3 colors

alendel
interior inspiration



Drapery



BYRON
Dijon

Pillows



BYRON
Cashew



HARVEST LINEN
Honey



HARVEST LINEN
Lavender

BETSY

- 100% Polyester
- 57" (145cm)
- V: 24.4" (62cm) - H: 27.5" (70cm)
- 60,000 DR Wyzenbeek ISO 12947-2:2016
- Pilling Class 4-5

- WA-Washable / P-Dry Clean
- Country of Origin: India
- Available in 5 colors

alendel
interior inspiration



Pillows - Bedding



BETSY
Tuscan



MERMAID
Flint

Draperies



RONA
Putty



BRENT
Taupe

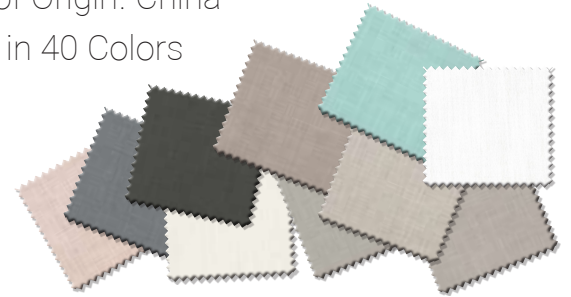
LINENHOUSE

Linenhouse is a multi-purpose fabric.

This is a workhorse, with an abrasion of 110,000 Wyzenbeek Cotton Duck.

Recommended End Use: Curtains, Draperies, Upholstery, Light Upholstery, Bed Covering, Accessories

- 95% Polyester, 5% Linen / Lin
- 57" (145cm)
- 110,000 DR Wyzenbeek Cotton Duck
- NFPA 260 Class 1 (UFAC), CAL 117/SE, FMVSS 302
- WA-Washable / P-Dry Clean
- Country of Origin: China
- Available in 40 Colors



ROOM SET 13
Living Room

Drapery



LINENHOUSE
Cotton

Pillows



LINENHOUSE
Winter White



LINENHOUSE
Fossil

Chairs & Sofa



CHILL
Turquoise



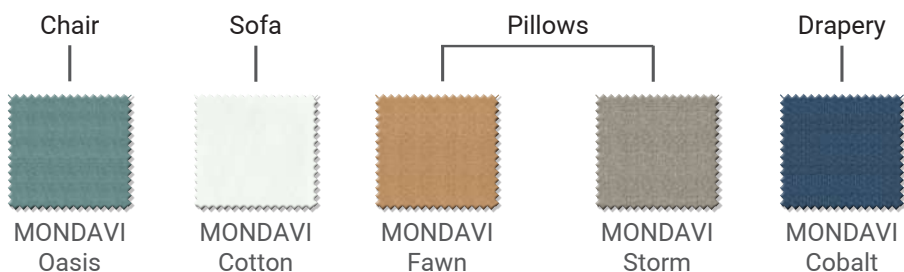
WHISKEY
Cotton

Mondavi is a lush multi-purpose velvet, with a buttery hand and mottled pile. Mondavi comes at a time when renewing and repurposing is at the forefront of sustainability. Replace the seating of your grandmother’s cane dining chairs or reupholster a vintage settee, not only will Mondavi preserve that authentic appearance, but it will guarantee it many years to come. With an abrasion of 100,000 double rubs; a pile rating of 4, and easy clean/easy care fibreguard properties, Mondavi, a workhorse velvet, is a must have.

- 100% Polyester
- 54" (137cm)
- 100,000 DR Wyzenbeek
- Pilling Class 4
- NFPA 260/UFAC Class 1, CAL 117/SE, FMVSS 302
- FibreGuard Stain Free Technology
- WA-Washable / P-Dry Clean
- Country of Origin: India
- Available in 34 Colors



ROOM SET 14
Living room




Alendel is focused on supporting sustainability. Offering recycled, eco-friendly fabrics is a step forward.

The New Haven collection offers sustainable drapery fabric options. Both Hartford and Bridgeport contain over 50% recycled polyester and are certified GRS.

What is recycled polyester? Recycled polyester uses PET which is obtained by sterilizing and shredding plastic bottles, that are then melted down and spun into yarn which can be transformed into fiber and then blended into fabric.

The Global Recycled Standard (GRS) is a voluntary product standard for tracking and verifying the content of recycled materials in a final product. The standard applies to the full supply chain and addresses traceability, environmental principles, social requirements, chemical content and labeling.

 **ECO FRIENDLY**

The 'Eco' quality label identifies products that have been produced using sustainable fibres and yarns such as recycled polyester and organic cotton.

BRIDGEPORT

Bridgeport is a wide width 118" (300 cm) blended recycled polyester + polyester semi-sheer, that is textural, with high and low lights, multi-toned for added interests and depth. Bridgeport can be washed up to 60C or dry cleaned. The colorfast rating is a 5-6.



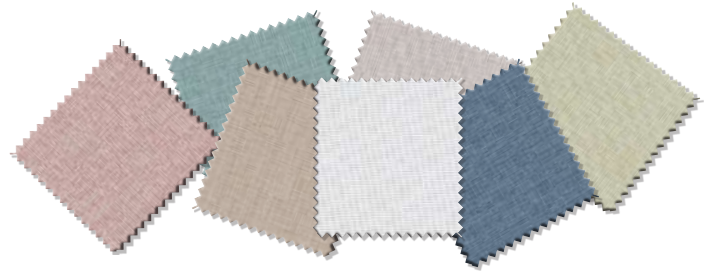
HARTFORD

Hartford is a wide width 120" (304 cm) blended recycled polyester + polyester drapery fabric, that has a natural linen look texture, multi-toned for added interests and depth. Hartford can be washed up to 60C or dry cleaned. The colorfast rating is a 7. Bridgeport and Hartford can be used independently or layer them together for a cohesive look. Both Bridgeport and Hartford pass NFPA 701 & CAN/ULS-S109.



BRIDGEPORT

- 56% Recycled Polyester, 44% Polyester
- 118" (300cm)
- Shown Railroaded
- NFPA 701, CAN/ULC S-109, FMVSS302
- WA-Washable / P-Dry Clean
- Country of Origin: Turkey
- Available in 29 Colors
- Sustainable & Eco-Friendly



ROOM SET 15
Bedroom

Bedding & Pillows

Headboard

Drapery

Chair



BRIDGEPORT
Sailor



BRIDGEPORT
Bamboo



BRIDGEPORT
Oasis



BEEKMAN
Breeze



MONDAVI
Cotton



BRIDGEPORT
Oasis



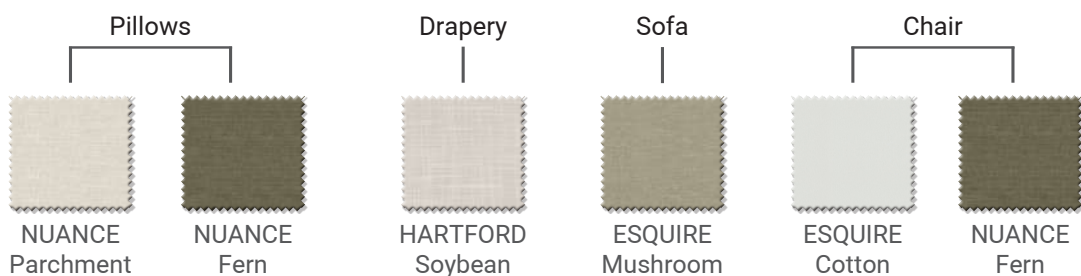
BERLIN
White



MONDAVI
Cobalt

HARTFORD

- 56% Recycled Polyester, 44% Polyester
- 120" (304cm)
- Shown Railroaded
- NFPA 701, CAN/ULC S-109, CAL 117/SE, FMVSS302
- WA-Washable / P-Dry Clean
- Country of Origin: India
- Available in 28 Colors
- Sustainable & Eco-Friendly



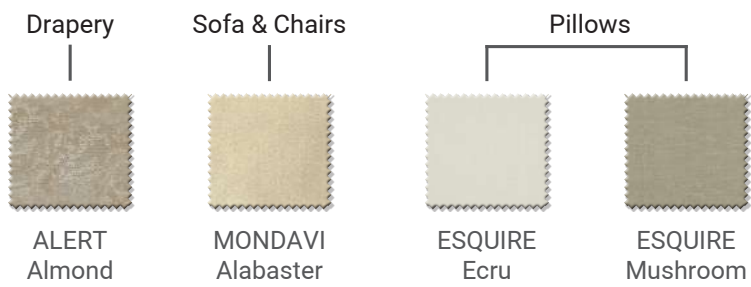
On the heels, Alendel's best seller Goodnight CAN/ULC-S109, Goodnight FR Volume 2 offers an in-depth collection of patterned blackout drapery options. The beauty of this collection is the self-lined 3 pass blackout properties, curated best-selling neutral color palette and classic subtle designs.

This complete collection is made of 100% polyester, 55" wide & machine washable to 30C.

All patterns pass NFPA 701 and are Oeko-Tex compliant. There are 7 patterns, 42 SKUs & available in various colorways.



ROOM SET 17
Living Room



There are many purposes for adding lining to custom drapery. Lining can protect drapery from sun damage, prolong its life expectancy as well as, provide body and weight.

Sun can fade and damage fabric over time, so a lining provides a protective layer from harmful UV light, not only for the face fabric but, for flooring and furniture in a space. Blackout lining provides the most protection from the sun.

Types of lining:

Waterline was designed specifically to protect the face fabric from moisture. Condensation on the window can stain and damage the face fabric. Water-repellant drapery lining shields your drapery from unwanted moisture. Waterline is a good choice for kitchens and bathrooms.

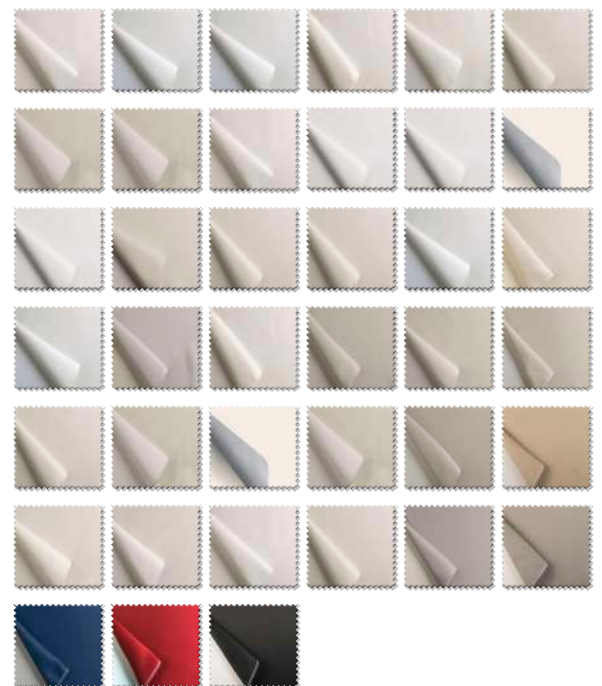
Interlining is particularly effective at thermal and noise insulation. Because it's thick, it is often used to create fuller, heavier looking draperies that have a luxurious feel. It's commonly used with silks and taffetas. Interlining, meaning it should be sandwiched between the face fabric and another drapery lining, often a blackout.

Blackout lining is added to face fabric for a variety of reasons. This fabric can help darken a room and even dampen sound and block out outside noises. In addition, this particular lining, can help regulate room temperature as well. All drapery lining provides some degree of insulation however, certain linings are specifically designed for it. They can help save on heating costs by reducing drafts and trapping in heat during winter months and keep things cooler in the summer by blocking out heat.

Sunout is a great dimout option when wanting to add some body and weight to the drapery but still wanting to achieve a flowy drapery with not too much rigidity.

Several of our linings are **Flame Retardant** that can be used in commercial settings.

They meet **NFPA 701** and/or **CAN/ULC-S109** fire codes and certificates can be sent upon request.







ALENDEL FABRICS LIMITED

Tel.: 905.669.1998 1.800.387.9968

fabrics@alendel.com

www.alendel.com